

Iceboating, Williams' Lake, ca. 1920

Iceboating on the Northwest Arm and the many lakes in the area was a favourite pastime earlier in the century. Alexander and Strachan Jollimore are shown with their iceboat on Williams' Lake near Jollimore village.

Jack Jollimore Collection



Military Prison, Melville Island, 1928

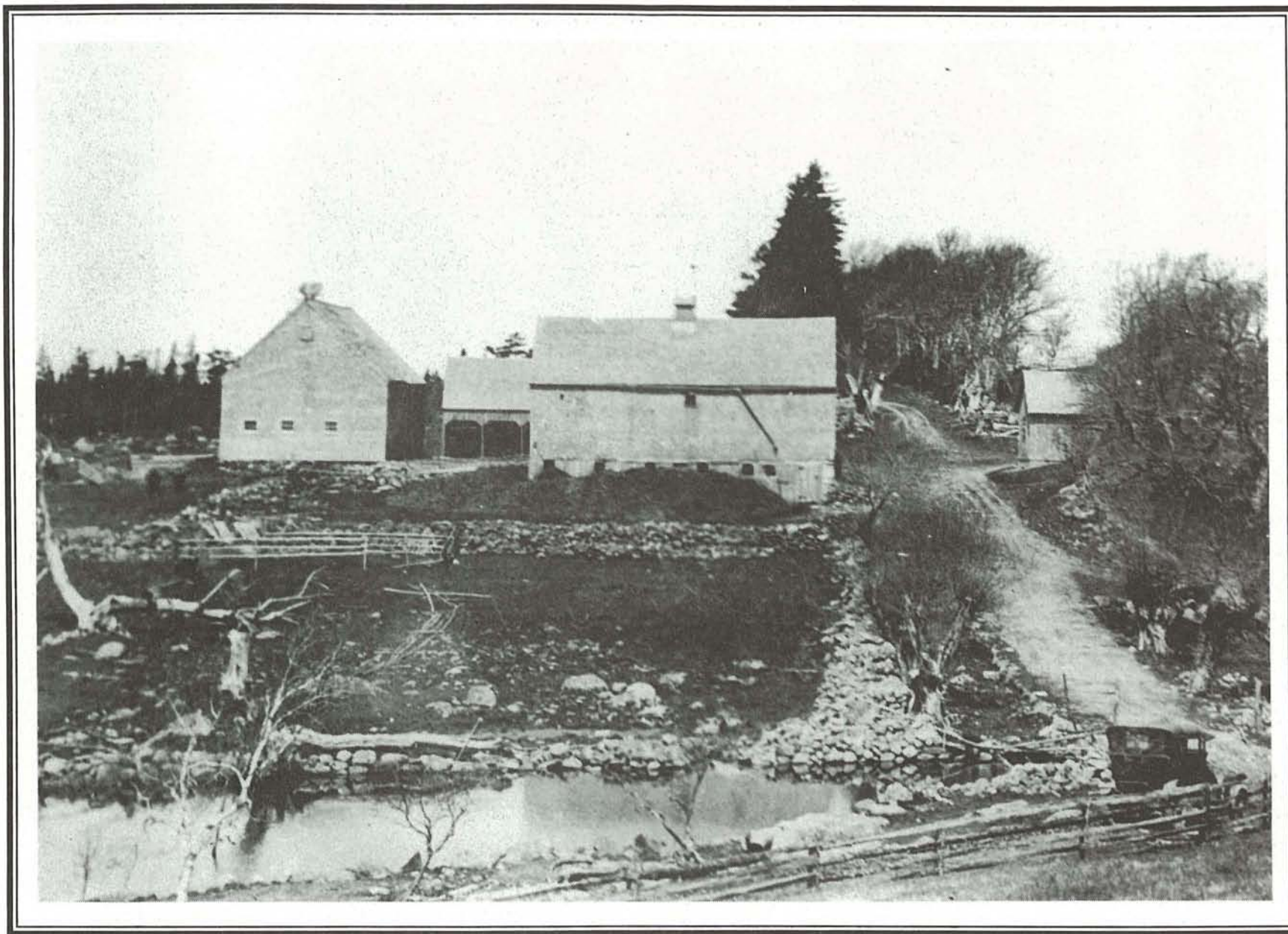
In 1928 it was still possible to see many of the original buildings on Melville Island. The island was first used as a prison in 1803 and the large building with dormer windows was erected in 1808 to house the many French sailors captured during the Napoleonic wars. The stone cells and the Chief Warder's house on the hill are still standing. Today the cells are used for storage and the Warder's home is the club house of the Armdale Yacht Club.



Herring Cove Road, Spryfield, 1943

The Spryfield Garage, operated by Foster Bezanson, stood at the corner of the Herring Cove Road and Dentith Road adjacent to the Purcell home. The white picket fence surrounded the garden of the Pinegrove Hotel and beyond the Kent Theatre were the Crawford house, the Frazee canteen and the Dan MacNeil home. The steeple of Emmanuel Church can be seen in the background.

Peter Saulnier collection



The Barns at Kidston Farm, Spryfield, 1923

William Kidston purchased this farm on Rockingstone road in the early 19th century and it is probably part of the estate carved out of the wilderness by Captain William Spry in 1769. Although the barns have now been replaced by new suburban housing, the little ice house still stands facing the road. Over the years the farm has been known as Thornhill Farm and Rockingstone Farm.

Nova Scotia Museum



The Drysdale Farm, Spryfield, 1928

The cows are making their way along the Herring Cove Road near Long Pond. The Drysdales, who were early settlers in Spryfield, inherited this farm from the Thomas Family who had been granted 100 acres of land here in 1866.

Dave Drysdale collection



The Atlantic Sugar House, Northwest Arm, ca. 1900

This small sugar refinery was in operation for about 20 years prior to 1900. The brick tower was added to the old mill that stood on the site for most of the 19th century. The wooden mill wheel can be seen on the right of the photograph. When the refinery was demolished many of the beams were incorporated into the McCurdy home which later became the club house of the Royal Nova Scotia Yacht Squadron.

Public Archives of Nova Scotia



Boutilier's Boat Rental, Jollimore, 1939

The Boutilier and Jollimore families were the original settlers of Jollimore village in the early 19th century. Joe Boutilier operated this boat and canoe rental close to the Memorial Tower until the late 1950s. He also ran a ferry service across the Arm to the foot of Oakland Road.

Lucy Scott collection



View of the Village, Herring Cove, 1895

Herring Cove, or Dunk Cove as it was first known, attracted fishermen settlers to its rocky shores soon after the founding of Halifax in 1749. Shipwreck, courageous rescue attempts and champion scullers and oarsmen have all been part of the colourful history of the cove. The Reyno homestead can be seen in the upper right hand corner of the picture with the Dempsey home next to it.

Garth Reyno collection



Cunard School, Jollimore, 1922

The two room school house which served the Northwest Arm area burned in 1947 but traces of it can still be seen on Albion Road. In the 19th century a chapel stood on the site where school classes were also held.

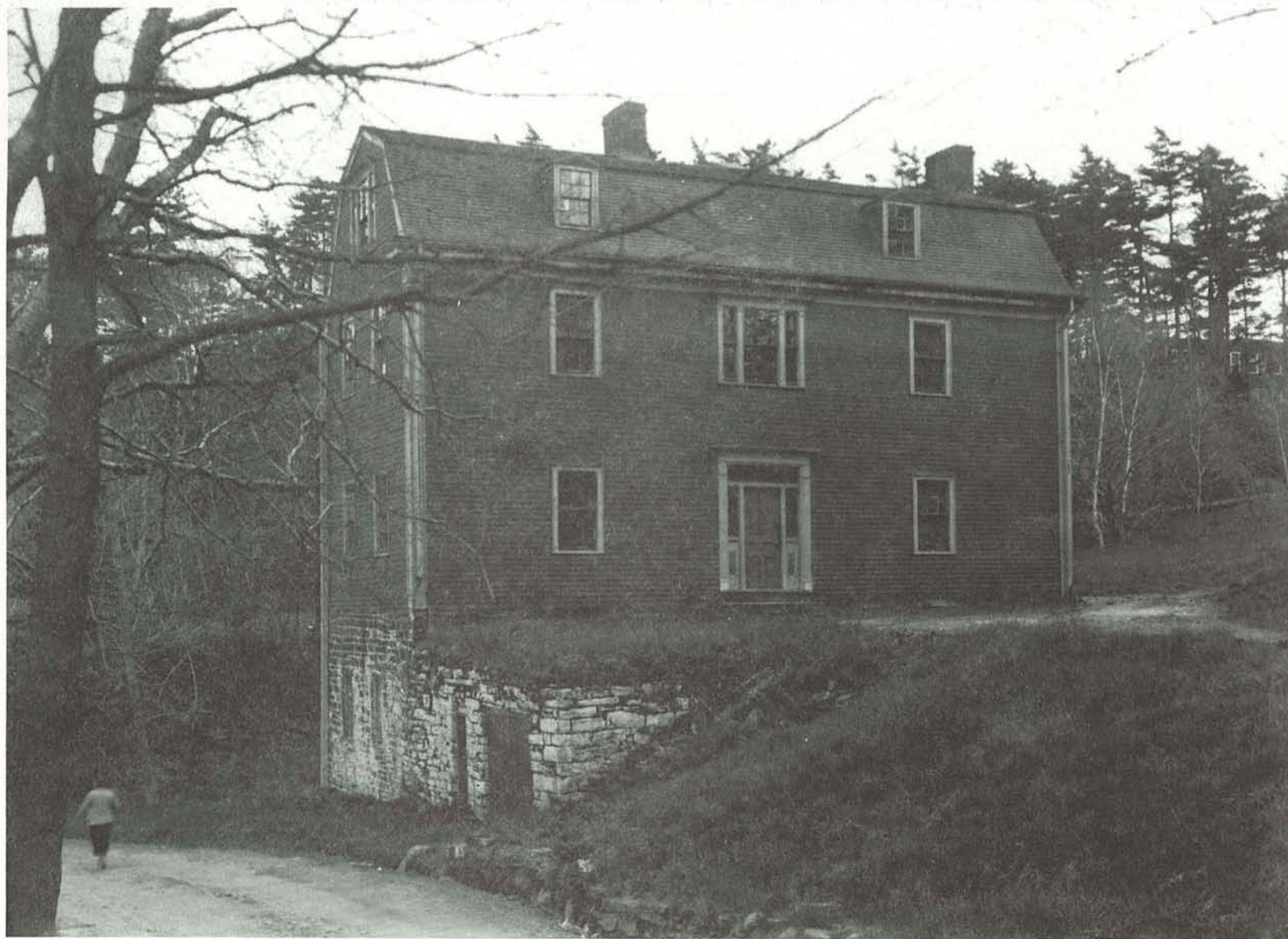
Lucy Scott collection



The Rockingstone, Spryfield, ca. 1905

This huge granite boulder, located on the former Kidston farm property, was deposited by the retreating glaciers of the last ice age. It is reputed to weigh about 200 tons. From the 1820s it has been a tourist attraction and King George V, when Prince of Wales, was one of many visitors. Today the great stone can still be rocked by means of a small wooden lever.

Public Archives of Nova Scotia



The Thomas Hosterman House, Armdale, 1936

The Hosterman family owned the property now known as Regatta Point for many years and were involved with the industries which used the stream flowing out of Chocolate Lake. This house stood just above the stream on the Herring Cove Road. On the right is a glimpse of the old Armdale School, now the Chocolate Lake Recreation Centre.



The Arm Bridge, Armdale, ca. 1870

The busy Armdale Rotary now covers this site at the head of the Northwest Arm. Charles Geizer's blacksmith shop is on the west side and Bethany Church, which is still standing, can be seen on the hill.

Cyril Morgan collection